

A man in a dark suit and white shirt is shown from the chest up, pressed against a glass surface. His hands are splayed against the glass, and his face is blurred, conveying a sense of being trapped or overwhelmed. The background is a dark, textured wall.

LIFE'S TRAPS

AVOIDING THE DAMAGE

1 John 2:16

For the world offers only a craving for physical pleasure, a craving for everything we see, and pride in our achievements and possessions.

These are not from the Father, but are from this world.

1 Samuel 15:1-3

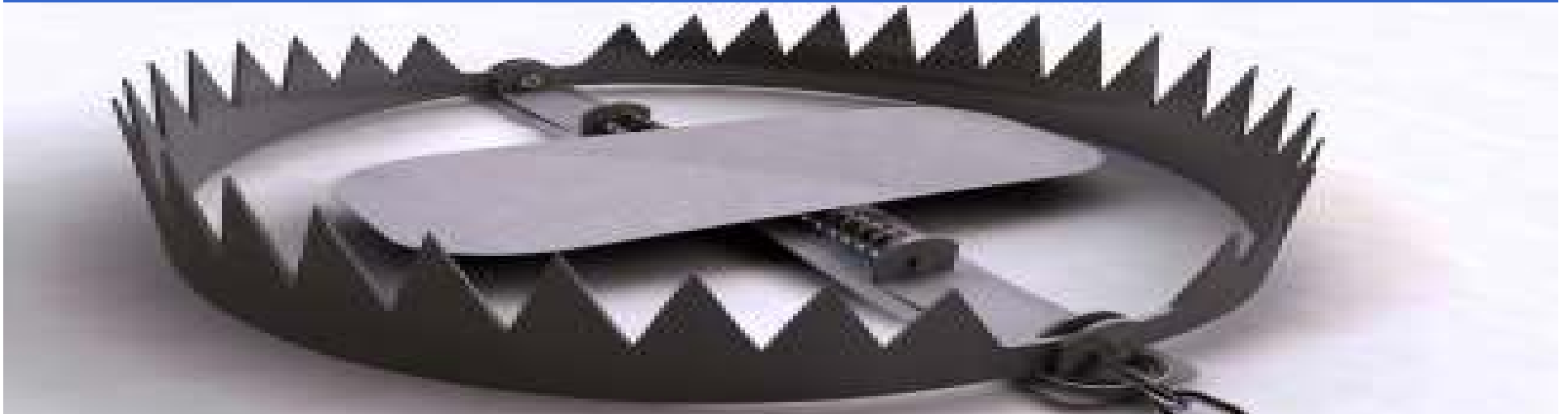
Samuel said to Saul, "I am the one the LORD sent to anoint you king over his people Israel; so listen now to the message from the LORD. This is what the LORD Almighty says: 'I will punish the Amalekites for what they did to Israel when they waylaid them as they came up from Egypt. Now go, attack the Amalekites and totally destroy everything that belongs to them.'

1 Samuel 15:7-9

Then Saul attacked the Amalekites all the way from Havilah to Shur, to the east of Egypt. He took Agag king of the Amalekites alive, and all his people he totally destroyed with the sword. But Saul and the army spared Agag and the best of the sheep and cattle, the fat calves and lambs—everything that was good. These they were unwilling to destroy completely, but everything that was despised and weak they totally destroyed.

1. God is clear, yet we say “BUT”...

PARTIAL obedience is NO obedience.



1 Samuel 15:10-12

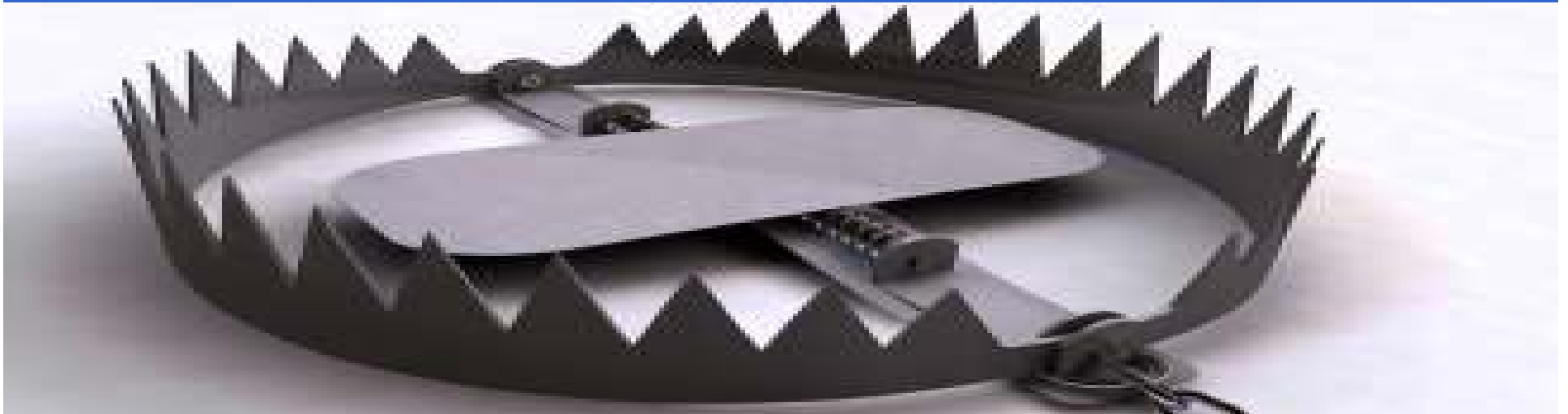
Then the word of the LORD came to Samuel: "I am grieved that I have made Saul king, because he has turned away from me and has not carried out my instructions." Samuel was troubled, and he cried out to the LORD all that night.

Early in the morning Samuel got up and went to meet Saul, but he was told, "Saul has gone to Carmel. There he has set up a monument in his own honor and has turned and gone on down to Gilgal."

1. God is clear, yet we say “BUT”...

PARTIAL obedience is NO obedience.

2. Build a monument to the WRONG person.



1 Samuel 15:17-19

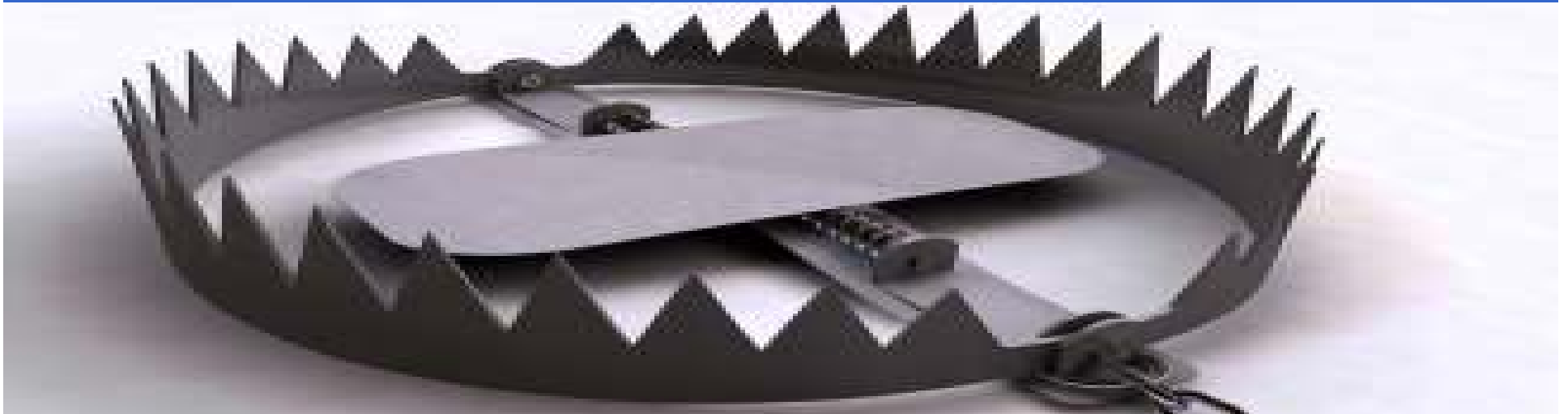
Samuel said, "Although you were once small in your own eyes, did you not become the head of the tribes of Israel? The LORD anointed you king over Israel. And he sent you on a mission, saying, 'Go and completely destroy those wicked people, the Amalekites; make war on them until you have wiped them out.' Why did you not obey the LORD? Why did you pounce on the plunder and do evil in the eyes of the LORD?"

1. God is clear, yet we say “BUT”...

PARTIAL obedience is NO obedience.

2. Build a monument to the WRONG person.

3. Misjudge our own IMPRESSIVENESS.



1 Samuel 15:24-28

Then Saul said to Samuel, "I have sinned. I violated the LORD's command and your instructions. I was afraid of the people and so I gave in to them. Now I beg you, forgive my sin and come back with me, so that I may worship the LORD."

As Samuel turned to leave, Saul caught hold of the hem of his robe, and it tore. Samuel said to him, "The LORD has torn the kingdom of Israel from you today and has given it to one of your neighbors—to one better than you."

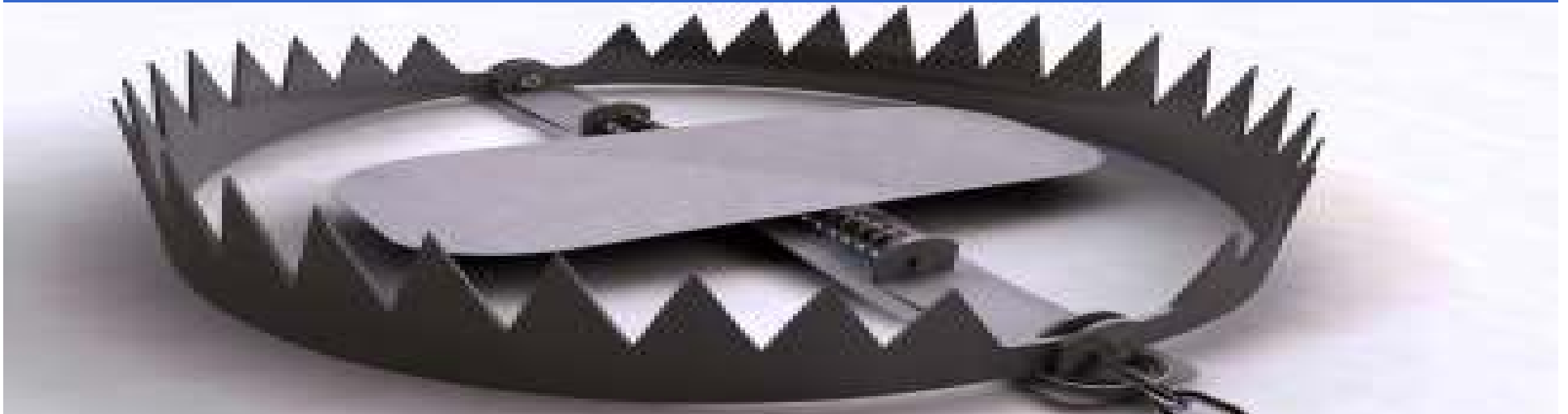
1. God is clear, yet we say “BUT”...

PARTIAL obedience is NO obedience.

2. Build a monument to the WRONG person.

3. Misjudge our own IMPRESSIVENESS.

4. More worried about LOOKING good to people than to God.





1 Samuel 15:30-31

Saul replied, "I have sinned. But please honor me before the elders of my people and before Israel; come back with me, so that I may worship the LORD your God." So Samuel went back with Saul, and Saul worshiped the LORD.

1. God is clear, yet we say “BUT”...

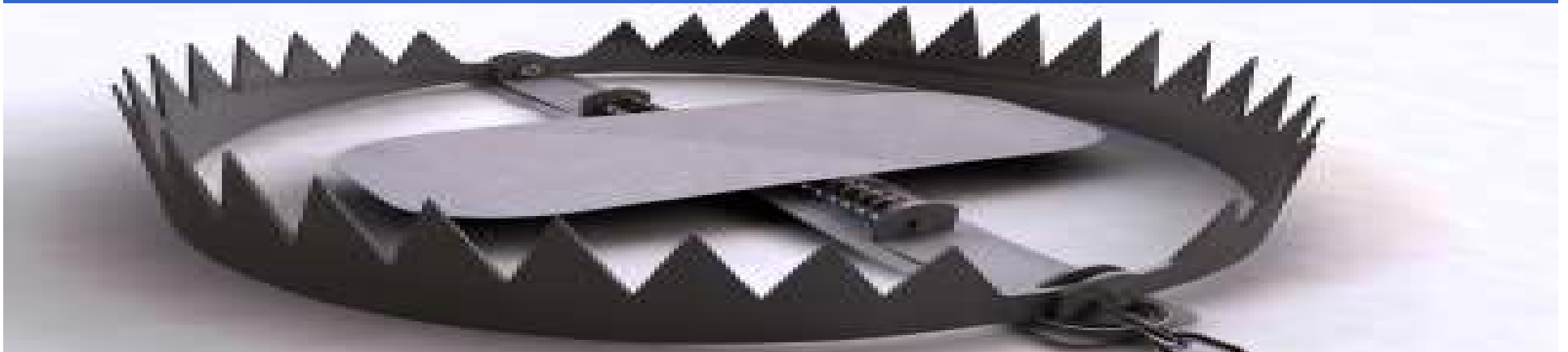
PARTIAL obedience is NO obedience.

2. Build a monument to the WRONG person.

3. Misjudge our own IMPRESSIVENESS.

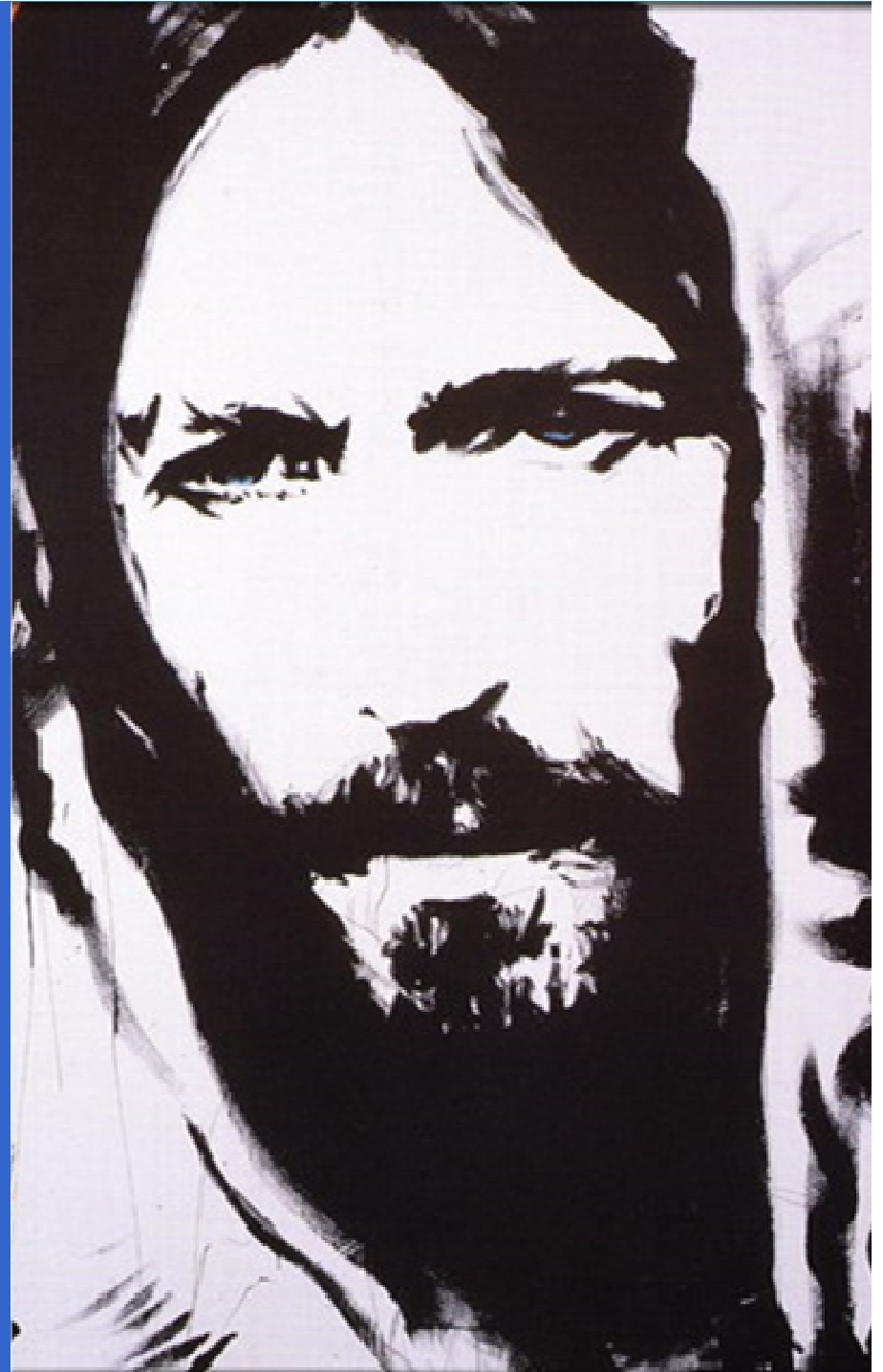
4. More worried about LOOKING good to people than to God.

5. When we fail, it's more about “MANAGING our IMAGE” than making it right.



John 5:44

How can you believe
if you accept praise
from one another, yet
make no effort to
obtain the praise that
comes from the only
God?



A man in a dark suit and white shirt is shown from the chest up, pressed against a glass surface. His hands are splayed against the glass, and his face is blurred, conveying a sense of being trapped or overwhelmed. The background is a dark, textured wall.

LIFE'S TRAPS

AVOIDING THE DAMAGE